



# WESTERN PLASTICS

Tyvek® • Vinyl • Tri-Laminate • Silicone

## Tyvek® Wristbands



## Vinyl Wristbands



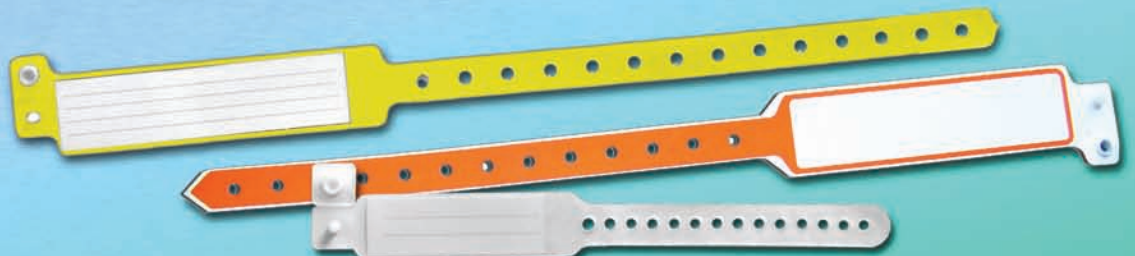
## Tri-Laminate Wristbands



## Silicone Wristbands



## Medical Wristbands





# WESTERN PLASTICS

# Tyvek®

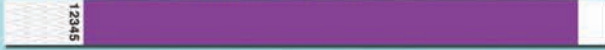
Tyvek® • Vinyl • Tri-Laminate • Silicone

- Waterproof • Non-stretch
- Non-transferable • Consecutive Numbers

Item # TK51 Solid Wristbands- 1" x 10"



Item # TK53 Solid Wristbands- 3/4" x 10"



Item # TKP1 Pattern Wristbands- 1" x 10"



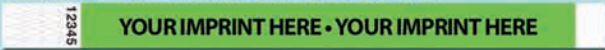
Item # TKP3 Pattern Wristbands- 3/4" x 10"



Item # TK1C Custom Printed Wristbands- 1" x 10"



Item # TK3C Custom Printed Wristbands- 3/4" x 10"



Imprint Area: 3/4" x 7"

Imprint Area: 1/2" x 7"

## Stock Patterns

Most stock solids and stock patterns are available for same day shipment.

Available Patterns - 1" only



American Flag



Invisible INK

Glowes under blacklight.

Available in 3/4" - Drinking Age, Bowling

Available Patterns - 3/4" only



Beach



Fireworks



Paw Print



Bowling



Happy Birthday



Pit Pass



Dots



Leaves



Ribbon



Snowman (Seasonal)



Snowflake (Seasonal)



Pumpkins (Seasonal)

Available Patterns - 1" and 3/4"



Arrows



Drinking Age



Stripes



Checkerboard



Happyface



Tribal



Cosmic



Hypnotic



Under21



Dancing



Pipes



V.I.P.



Dolphins



Stars & Reverse Stars



Waterpark

METALLIC

REGULAR COLORS

NEON COLORS



Gold Silver



Rust Wine



White Black



Green Blue



Red Purple



Orange Aqua



Ocean Blue



Magenta Blue



Red Orange



Lime Pink



Yellow Highlight

# Silicone



Debossed

### ADULT BANDS

202mm (7.953 INCHES) Wide X  
2mm (0.472 INCHES) High X 2mm Thick

### CHILD BANDS

180mm (7.087 INCHES) Wide X  
12mm (0.472 INCHES) High X 2mm Thick

Plain



Screen Printed



Debossed

### SILICONE BAND BAG - CUSTOM PRINTING!

Silicone Wristbands come packaged in individual imprintable bags.  
Custom imprint Area: 3.9" wide x 3.15" high.



# WESTERN PLASTICS

Vinyl • Tyvek • Silicone • Tri-Laminate

## Vinyl Wristbands

## Tri-Laminate Wristbands

1" Wide Face

1" Wide Face

L-Shape

L-Shape

5/8" L-Shape 5-tab

Holographic



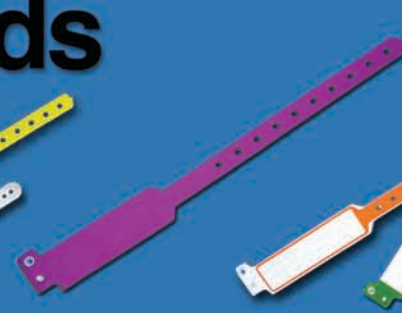
# Medical Wristbands

Patient ID Medical Wristbands

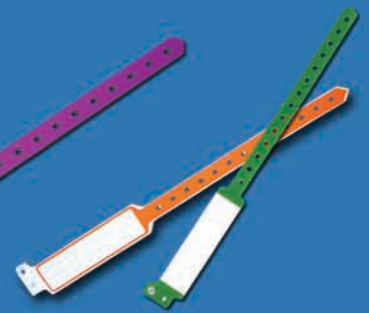
AVAILABLE STYLES



Insert bands



Write-on bands



Imprinter bands

AVAILABLE SIZES

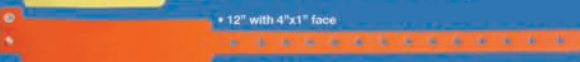
Infant



Adult/Pediatric



Adult



Custom printed & Alert bands



Mother & baby sets (numbered)



Infant bands

AVAILABLE COLORS

